

SECTION 6, T.6N., R.2E., S.L.B. & M.

IN WEBER COUNTY
SCALE 1" = 400'

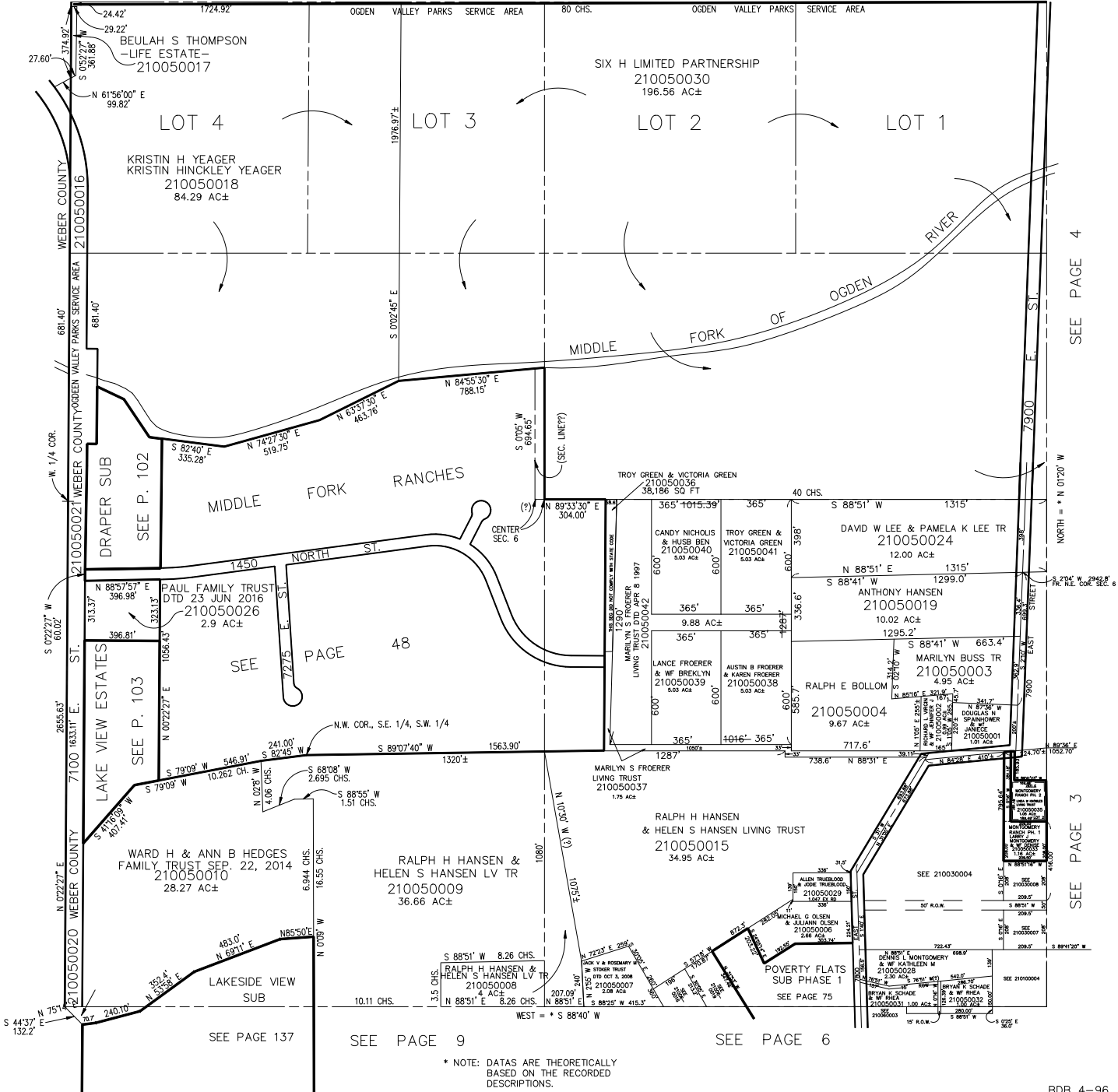
TAXING UNIT: 520

SEE BOOK 23, PAGE 12

SEE BOOK 20, PAGE 1

SEE PAGE 4

SEE PAGE 3



* NOTE: DATAS ARE THEORETICALLY BASED ON THE RECORDED DESCRIPTIONS.